

Grab Handle for removing the fire protection panel.

Type SBV-F120 underside

**Loading Capacity:** 125 kN test load (per EN124) when filled with grade C35/45 Concrete (EN 206)

**Materials:** Frame and cover in 2 mm cold-formed precision steel profiles. Hot-dip galvanised. Fire protection panel on stainless steel Z brackets, fire-resistant seal.

**Features:** Accurately-manufactured smell proof access cover. Tapered design allows easy opening. Robust steel mesh reinforcement.

**Fire Test Certificate:** certificate issued by the Institute for Fire Protection Technology and Safety Research (IBS) confirms that Type SBV-F120 steel resists a fire for 120 minutes and this significantly contributes to safety in the event of a fire.

**Lift Open System:** SureCover SBV-F120 comes with a set of lifting keys and precise installation instructions. After lifting out the cover, the fire protection panel can be removed using its grab handle. The shaft is then accessible without restriction. Jammed covers are released by simply turning the Brass Key provided.

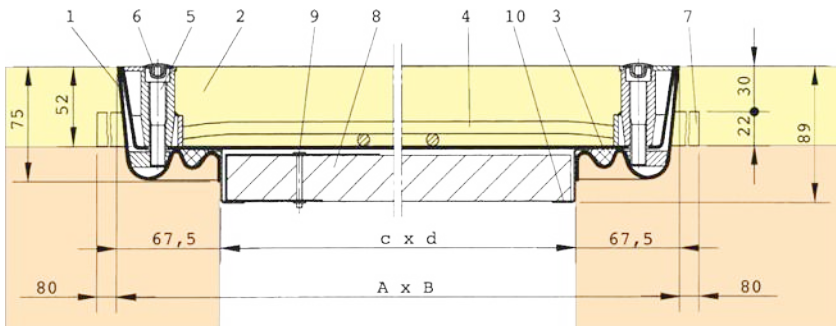
**Applications:** Access covers inside buildings that are required to be fire-resistant.

**Installation:** Installation must be carried out according to our instructions. With water-tight models, care must be taken to seal the outer frame into the surrounding flooring.



**Web Link:**

<https://surespancovers.com/surecover>



- 1 Frame
- 2 Cover
- 3 Seal (fire resistant)
- 4 Reinforcement
- 5 Allen Screw

- 6 Plastic cap
- 7 Anchor
- 8 Fire protection panel
- 9 Grab handle with blind rivet
- 10 Stainless steel Z-bracket

Product Reference	Clear Opening	Outside Dimensions	Weight
	(≈ mm) c x d	(≈ mm) A x B	
SBV-F120 33	300 x 300	435 x 435	13 kg
SBV-F120 44	400 x 400	535 x 535	19 kg
SBV-F120 45	450 x 450	585 x 585	21 kg
SBV-F120 55	500 x 500	635 x 635	23 kg
SBV-F120 64	600 x 400	735 x 535	23 kg
SBV-F120 66	600 x 600	735 x 735	30 kg
SBV-F120 635	635 x 635	770 x 770	32 kg
SBV-F120 86	800 x 600	935 x 735	38 kg
SBV-F120 88	800 x 800	935 x 935	45 kg
SBV-F120 106	1000 x 600	1135 x 735	45 kg
SBV-F120 108	1000 x 800	1135 x 935	54 kg
SBV-F120 110	1000 x 1000	1135 x 1135	63 kg