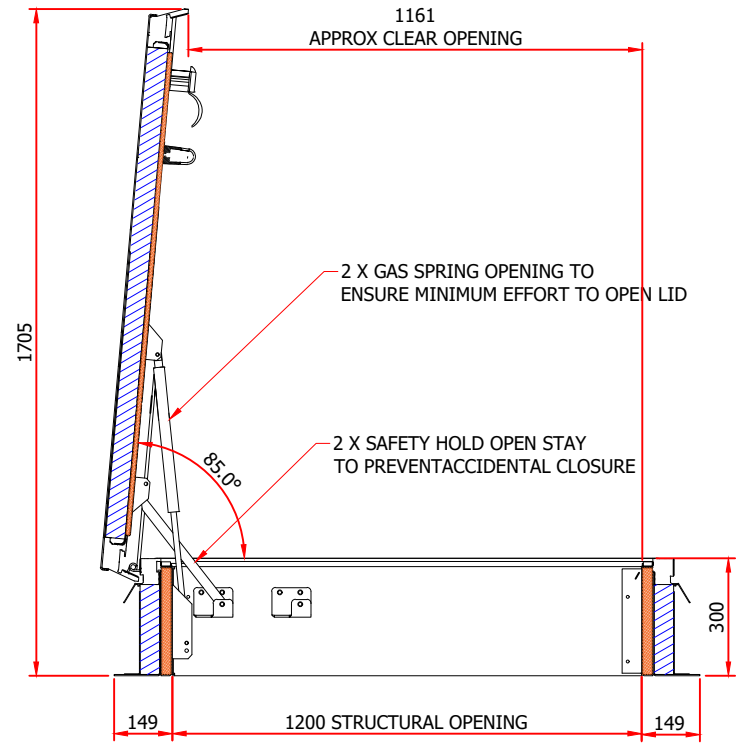
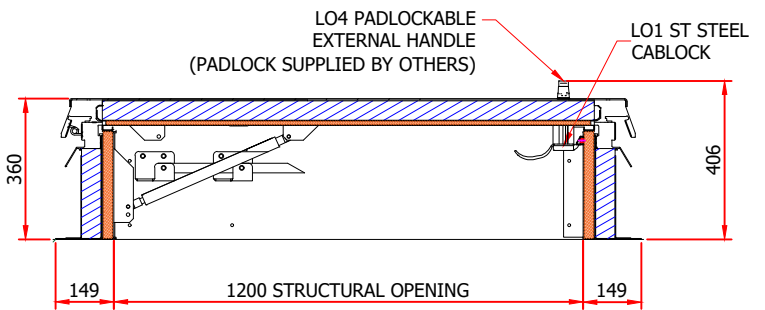
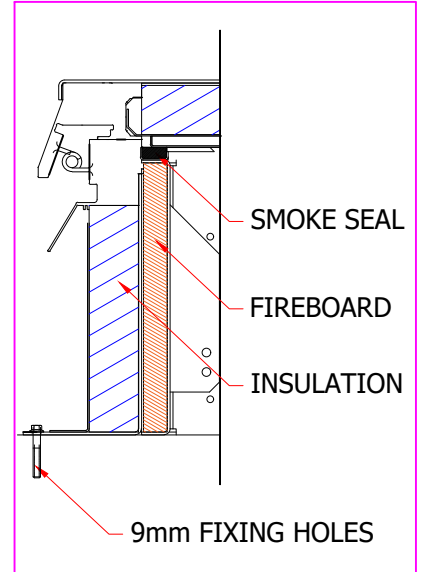


SRH TB FR 1200 X 1200MM  
THERMALLY BROKEN INSULATION U-VALUE 0.63W/M2K  
UP TO 4 HOUR FIRE RESISTANCE FOR INTEGRITY TO EN1634-1:2014

1 No. REQD  
MATERIAL: ALUMINIUM & GALVANISED STEEL  
FINISH: SELF COLOUR

APPROX WEIGHT: 250KG

ALL EXTERNAL FIXINGS  
BY OTHERS



|             |  |
|-------------|--|
| LASER CUT   |  |
| PUNCH PRESS |  |
| FOLDING     |  |
| DRILLING    |  |
| WELDING     |  |
| ASSEMBLY    |  |
| POWDER COAT |  |

DRAWING MADE BY CAD  
MANUAL CHANGES PROHIBITED

Copyright is claimed in this drawing and no copy may be made without prior written permission.

The article shown is also the subject of:

|  |
|--|
| patent rights                                    |
| registered design rights                         |
| unregistered rights                              |
| this drawing is a design document patent pending |

WIND RESTRAINTS SHOULD BE SPECIFIED ON ALL ACCESS HATCHES SUBJECT TO HIGH WIND CONDITIONS  
THIS IS A MANUALLY OPERATED ACCESS HATCH/COVER & IT IS ESSENTIAL THAT SAFE MEANS OF ACCESS IS PROVIDED FOR THE OPERATOR



Designed by SURESPAN  
Checked by SURESPAN  
Client ...  
Date ...

EXISTING LAW PROTECTS SURESPAN'S RIGHT OF POSSESSION TO THIS DRAWING. THE DESIGN OR THE DRAWING MUST NOT, WITHOUT PERMISSION OF THE COMPANY, BE PUBLISHED, COPIED, REPRODUCED MANUFACTURED OR EXPLOITED IN ANY OTHER UNAUTHORIZED WAY

|                                  |                 |
|----------------------------------|-----------------|
| Project ...                      | Date 01.08.2020 |
| Surespan SRH/TB/FR 1200 X 1200MM |                 |
| Revision                         | Sheet 1 / 30    |