



Loading Capacity: 125 kN test load (per EN124) when filled with grade C35/45 Concrete (EN 206)

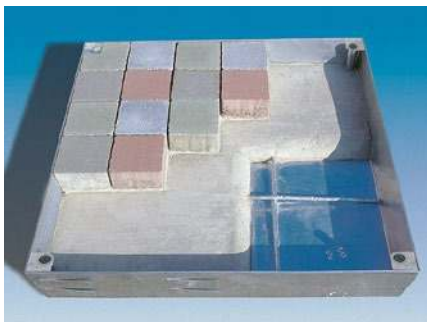
Materials: Frame and cover in a all stainless steel construction.

Features: Sealed cover with 10 cm deep recess. Virtually invisible when installed. EPDM seal. Robust steel mesh reinforcement, crosswise welded. Opening tool included.

Lift Open System: SureCover SBVEH- Maxi cover comes with a set of liftingkeys and precise installation instructions. Jammed covers are released by simply turning the Brass Key provided.

Applications: Inside buildings and their surroundings. Especially for those installations where the cover is to be filled with concrete slabs, bricks, paviors etc.

Installation: Installation must be carried out according to instructions. With water-tight models, care must be taken to seal the outer frame into the surrounding flooring and to fill the cover with water-tight concrete.



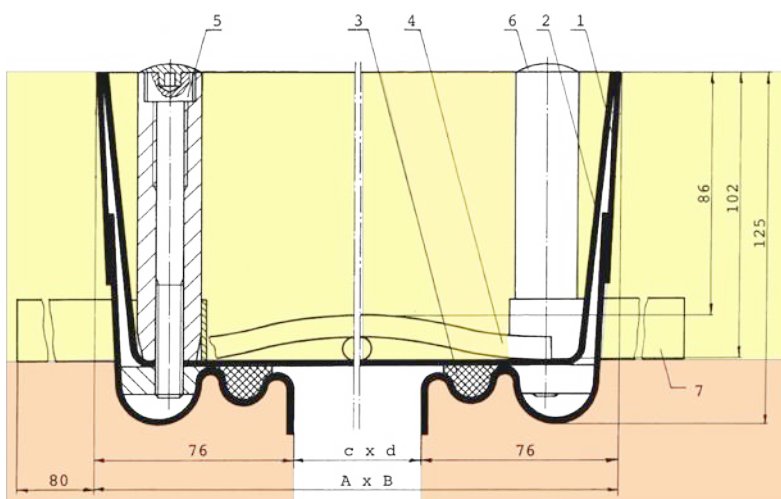
Type SBVEH - Maxi *partially filled* with coloured paviours.



Type SBVEH - Maxi *filled with* paviors, practically invisible.



Web Link:  
<https://surespancovers.com/surecover>



- 1 Frame
- 2 Cover
- 3 Seal
- 4 Reinforcement

- 5 Allen Screw
- 6 Plastic cap
- 7 Anchor

Product Reference	Clear Opening	Outside Dimensions	Weight
	(≈ mm)	(≈ mm)	
	c x d	A x B	
SBVEH Maxi 33	300 x 300	452 x 452	15 kg
SBVEH Maxi 44	400 x 400	552 x 552	22 kg
SBVEH Maxi 55	500 x 500	652 x 652	27 kg
SBVEH Maxi 64	600 x 400	752 x 552	28 kg
SBVEH Maxi 66	600 x 600	752 x 752	28 kg
SBVEH Maxi 77	700 x 700	852 x 852	32 kg
SBVEH Maxi 86	800 x 600	952 x 752	35 kg
SBVEH Maxi 88	800 x 800	952 x 952	40 kg
SBVEH Maxi 106	1000 x 600	1152 x 752	40 kg
SBVEH Maxi 108	1000 x 800	1152 x 952	44 kg
SBVEH Maxi 110	1000 x 1000	1152 x 1152	60 kg