



**Type SBV-GDZ central lock from underneath**



**Type SBV-GDZ to be opened from the underside with the central lock**

**Loading Capacity:** 125 kN test load (per EN124) when filled with grade C35/45 Concrete (EN 206)

**Materials:** Frame and cover made of 2 mm cold-formed precision steel profiles, hot-dip galvanised. Stainless steel hinges. High specification gas strut(s).

**Features:** Comfort-lift access cover. Smell proof, largely water-tight (not guaranteed to be completely water-tight). EPDM seal. Opening tools included. Opening is assisted by the gas strut(s) to such an extent that the cover can be opened and closed by one person.

**Central Locking System:** SureCover SBV- GDZ cover is equipped with a central locking system. The cover can be opened from above using a special socket key and easily unlocked from underneath using the built-in handle. Safety device fitted to prevent the open cover from closing.

**Applications:** For covers that need to be opened from above and below, quickly and without particular effort, e.g. in underground passageways, in underground railways, powerstations, telecommunication or military facilities etc. Not permitted to be used as emergency exit hatches or escape routes.

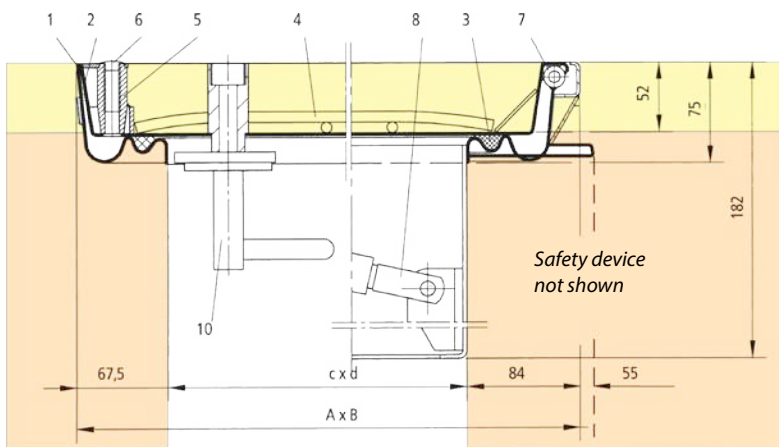
**Installation:** Installation must be carried out according to our instructions.

**Important note:** The gas strut(s) are not installed for transport-related reasons. These should be installed after the cover and frame have been installed and filled (concrete must be set), in the open position in accordance with installation instructions.



**Web Link:**

<https://surespancovers.com/surecover>



- 1 Frame
- 2 Cover
- 3 Seal
- 4 Reinforcement
- 5 Lifting Boss

- 6 Plastic cap
- 7 Hinge
- 8 Gas Strut
- 10 Central Lock

Product Reference	Clear Opening	Outside Dimensions	Weight
	(≈ mm)	(≈ mm)	
	c x d	A x B	
SBV-GDZ 66	600 x 600	735 x 751.5	30 kg
SBV-GDZ 86	800 x 600	935 x 751.5	38 kg
SBV-GDZ 88	800 x 800	935 x 951.5	44 kg
SBV-GDZ 106	1000 x 600	1135 x 951.5	39 kg
SBV-GDZ 108	1000 x 800	1135 x 951.5	50 kg
SBV-GDZ 110	1000 x 1000	1135 x 1151.5	58 kg

**Number of gas struts**

Size: 600 x 600	1	Size: 800 x 800	2
Size: 800 x 600	2	Size: 1000 x 1000	2