



Loading Capacity: 125 kN test load (per EN124) when filled with grade C35/45 Concrete (EN 206)

Materials: Frame, cover and cross-beam in 2 mm cold-formed precision steel profiles. Hot-dip galvanised..

Features: Smell proof, largely water-tight multi-part cover (Not guaranteed to be completely water-tight). The cross-beams can be removed without tools, to give clear access to the entire duct. This gives clear access to the duct when retrofitting pipes or during repair work.

In addition to the standard cover height (approx.50 mm), a deep cover version (approx. 100 mm) is available. Ideal for infill with paviers.

Lift Open System: SureCover SBV- RA comes with a set of lifting keys and precise installation instructions. Jammed covers are released by simply turning the Brass Key provided.

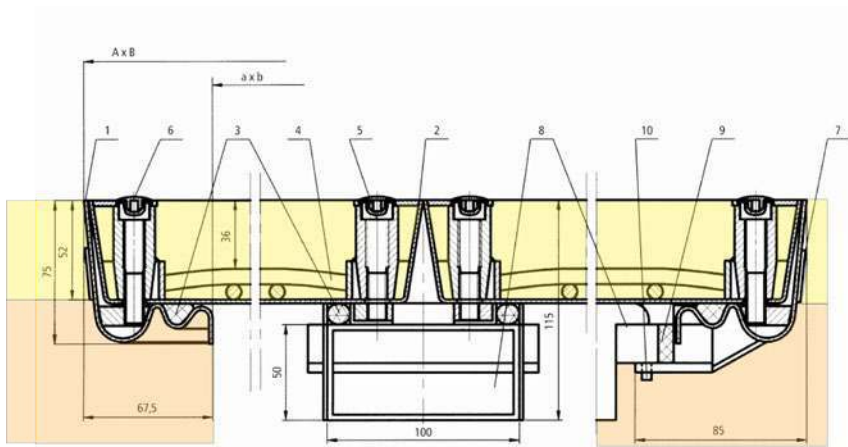
Applications: Ideal cover for supply and disposal ducts in the industrial and workshop sector, e.g. for energy, water and compressed air supply.

Installation: Installation must be carried out according to instructions. With water-tight models, care must be taken to seal the outer frame into the surrounding flooring.

Web Link:
<https://surespancovers.com/surecover>



*Figure 1: Cover Removed
Figure 2 & 3: Removing a cross beam*



- | | |
|---------------|-----------------------|
| 1 Frame | 6 Plastic cap |
| 2 Cover | 7 Anchor |
| 3 Top Seal | 8 Cross beam |
| 4 Bottom Seal | 9 Seal for cross beam |
| 5 Allen Screw | 10 Loctation pin |