



**Loading Capacity:** 125 kN test load (per EN124) when filled with grade C35/45 Concrete (EN 206)

**Materials:** Frame and cover in 2 mm cold-formed precision steel profiles. Hot-dip galvanised. Insulated version, consisting of: Z-brackets, EPDM seal, polyurethane rigid foam insulation panel coated with aluminium on both sides.

**Thermal resistance = 3.6 m<sup>2</sup> K/W (EU)**

**Thermal coefficient 0.276 W/m<sup>2</sup> K (=RC Warde)**

**Features:** Sealed cover with in laid insulation panel. Tapered design allows easy opening. Virtually invisible when installed. Robust steel mesh reinforcement.

**Lift Open System:** SureCover SBV Thermo comes with a set of lifting keys and precise installation instructions. Jammed covers are released by simply turning the Brass Key provided.

**Applications:** For areas inside buildings where a cover with insulation properties is required.

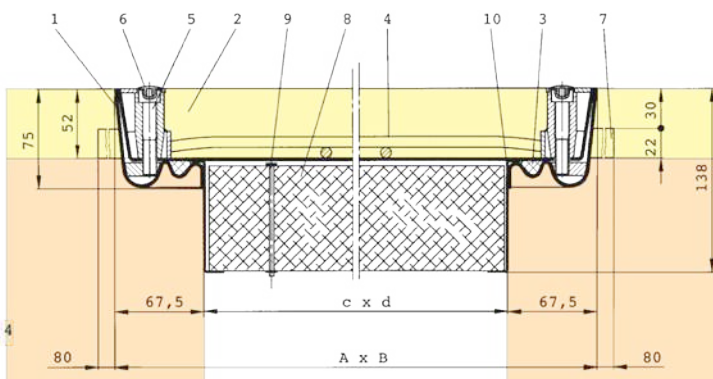
**Installation:** Installation must be carried out according to our instructions. With water-tight models, care must be taken to seal the outer frame into the surrounding flooring.



**Web Link:**

<https://surespancovers.com/surecover>

Product Reference	Clear Opening	Outside Dimensions	Weight
	(≈ mm) c x d	(≈ mm) A x B	
SBV-Thermo 55	500 x 500	635 x 635	19 kg
SBV-Thermo 64	600 x 400	735 x 535	19 kg
SBV-Thermo 66	600 x 600	735 x 735	23 kg
SBV-Thermo 86	800 x 600	935 x 735	29 kg
SBV-Thermo 88	800 x 800	935 x 935	33 kg
SBV-Thermo 106	1000 x 600	1135 x 735	33 kg
SBV-Thermo 108	1000 x 800	1135 x 935	39 kg
SBV-Thermo 110	1000 x 1000	1135 x 1135	45 kg



- 1 Frame
- 2 Cover
- 3 Seal
- 4 Reinforcement
- 5 Allen Screw
- 6 Plastic Cap
- 7 Anchor
- 8 Insulation plate in Z-bracket
- 9 Lifting handle for insulation plate
- 10 Alu Z-bracket