



Type SBVE-F90
Grab Handle for removing the fire protection panel.

Type SBVE-F90 underside

Loading Capacity: 125 kN test load (per EN124) when filled with grade C35/45 Concrete (EN 206)

Materials: Frame and cover in 2 mm cold-formed precision stainless steel profiles. Hot-dip galvanised. Fire protection panel on stainless steel Z brackets, fire-resistant seal.

Features: Accurately-manufactured smell proof access cover. Tapered design allows easy opening. Robust steel mesh reinforcement.

Fire Test Certificate: certificate issued by the Institute for Fire Protection Technology and Safety Research (IBS) confirms that Type SBVE-F90 stainless steel resists a fire for 120 minutes and this significantly contributes to safety in the event of a fire.

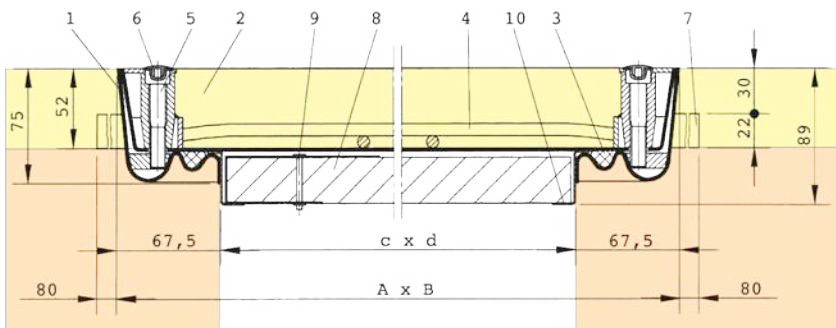
Lift Open System: SureCover SBVE-F90 comes with a set of lifting keys and precise installation instructions. After lifting out the cover, the fire protection panel can be removed using its grab handle. The shaft is then accessible without restriction. Jammed covers are released by simply turning the Brass Key provided.

Applications: Access covers inside buildings that are required to be fire-resistant.

Installation: Installation must be carried out according to our instructions. With water-tight models, care must be taken to seal the outer frame into the surrounding flooring.



Web Link:
<https://surespancovers.com/surecover>



- | | |
|-------------------------|--------------------------------|
| 1 Frame | 6 Plastic cap |
| 2 Cover | 7 Anchor |
| 3 Seal (fire resistant) | 8 Fire protection panel |
| 4 Reinforcement | 9 Grab handle with blind rivet |
| 5 Allen Screw | 10 Stainless steel Z-bracket |

Product Reference	Clear Opening	Outside Dimensions	Weight
	(≈ mm) c x d	(≈ mm) A x B	
SBVE-F90 33	300 x 300	435 x 435	13 kg
SBVE-F90 44	400 x 400	535 x 535	19 kg
SBVE-F90 45	450 x 450	585 x 585	21 kg
SBVE-F90 55	500 x 500	635 x 635	23 kg
SBVE-F90 64	600 x 400	735 x 535	23 kg
SBVE-F90 66	600 x 600	735 x 735	30 kg
SBVE-F90 635	635 x 635	770 x 770	32 kg
SBVE-F90 86	800 x 600	935 x 735	38 kg
SBVE-F90 88	800 x 800	935 x 935	45 kg
SBVE-F90 106	1000 x 600	1135 x 735	45 kg
SBVE-F90 108	1000 x 800	1135 x 935	54 kg
SBVE-F90 110	1000 x 1000	1135 x 1135	63 kg

