



Loading Capacity: 15 kN test load (per EN124)

Materials: frame and cover made of grade 304 stainless steel.

Features: Sealed. Cover with an installation depth of only 5 cm. Particularly suitable for situations where greater installation depth is not available. The bottom of the cover is reinforced. EPDM seal. Tapered design allows easy opening. Steel reinforcement guarantees good adhesion between the concrete infill and the bottom of the cover.

Lift Open System: SureCover SBVE- Shallow comes with a set of lifting keys and precise installation instructions. Jammed covers are released by simply turning the Brass Key provided.

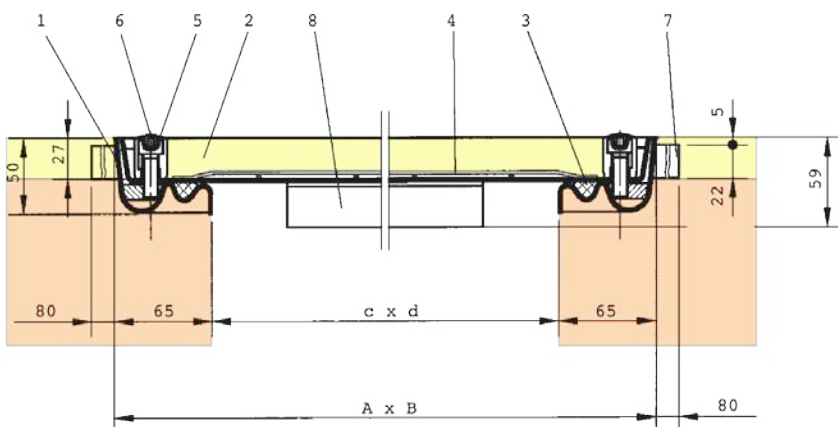
Applications: For pedestrian use inside buildings and their surroundings.

Installation: Installation must be carried out according to our instructions. With water-tight models, care must be taken to seal the outer frame into the surrounding flooring.



Web Link:

<https://surespancovers.com/surecover>



- 1 Frame
- 2 Cover
- 3 Seal
- 4 Reinforcement

- 5 Allen Screw
- 6 Plastic Cap
- 7 Anchor
- 8 Reinforcement

Product Reference	Clear Opening (≈ mm) c x d	Outside Dimensions (≈ mm) A x B	Weight
SBVE - Shallow 22	200 x 200	330 x 330	5 kg
SBVE - Shallow 33	300 x 300	430 x 430	8 kg
SBVE - Shallow 44	400 x 400	530 x 530	12 kg
SBVE - Shallow 55	500 x 500	630 x 630	15 kg
SBVE - Shallow 64	600 x 400	730 x 530	15 kg
SBVE - Shallow 66	600 x 600	730 x 730	19 kg
SBVE - Shallow 86	800 x 600	930 x 730	24 kg
SBVE - Shallow 88	800 x 800	930 x 930	28 kg
SBVE - Shallow 106	1000 x 600	1130 x 730	27 kg