



Loading Capacity: 125 kN test load (per EN124) when filled with grade C35/45 Concrete (EN 206)

Materials: Frame and cover in 2 mm cold-formed precision stainless steel profiles. Hot-dip galvanised. Insulated version, consisting of: Z-brackets, EPDM seal, polyurethane rigid foam insulation panel coated with aluminium on both sides.

Thermal resistance = 3.6 m² K/W (EU)

Thermal coefficient 0.276 W/m² K (=RC Warde)

Features: Sealed cover with inlaid insulation panel. Tapered design allows easy opening. Virtually invisible when installed. Robust steel mesh reinforcement.

Lift Open System: SureCover SBVE Thermo comes with a set of lifting keys and precise installation instructions. Jammed covers are released by simply turning the Brass Key provided.

Applications: For areas inside buildings where a cover with insulation properties is required.

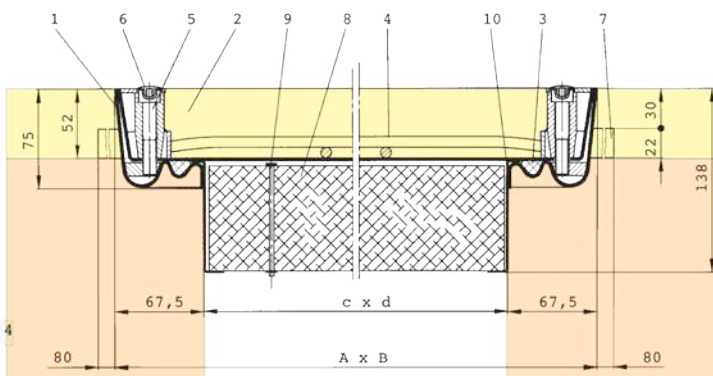
Installation: Installation must be carried out according to our instructions. With water-tight models, care must be taken to seal the outer frame into the surrounding flooring.



Web Link:

<https://surespancovers.com/surecover>

Product Reference	Clear Opening	Outside Dimensions	Weight
	(≈ mm) c x d	(≈ mm) A x B	
SBVE-Thermo 55	500 x 500	635 x 635	19 kg
SBVE-Thermo 64	600 x 400	735 x 535	19 kg
SBVE-Thermo 66	600 x 600	735 x 735	23 kg
SBVE-Thermo 86	800 x 600	935 x 735	29 kg
SBVE-Thermo 88	800 x 800	935 x 935	33 kg
SBVE-Thermo 106	1000 x 600	1135 x 735	33 kg
SBVE-Thermo 108	1000 x 800	1135 x 935	39 kg
SBVE-Thermo 110	1000 x 1000	1135 x 1135	45 kg



- | | | |
|-----------------|---------------------------------|---------------------------------------|
| 1 Frame | 5 Allen Screw | 9 Lifting handle for insulation plate |
| 2 Cover | 6 Plastic Cap | 10 Alu Z-bracket |
| 3 Seal | 7 Anchor | |
| 4 Reinforcement | 8 Insulation plate in Z-bracket | |