

Type SBVH - Maxi partially filled with coloured paviers.



Type SBVH - Maxi filled with paviers, practically invisible.

Loading Capacity: 125 kN test load (per EN124) when filled with grade C35/45 Concrete (EN 206)

Materials: Frame and cover in 2 mm cold-formed precision steel profiles. Hot-dip galvanised.

Features: Sealed cover with 10 cm deep recess. Virtually invisible when installed. EPDM seal. Robust steel mesh reinforcement, crosswise welded. Opening tool included.

Lift Open System: SureCover SBVH- Maxi cover comes with a set of liftingkeys and precise installation instructions. Jammed covers are released by simply turning the Brass Key provided.

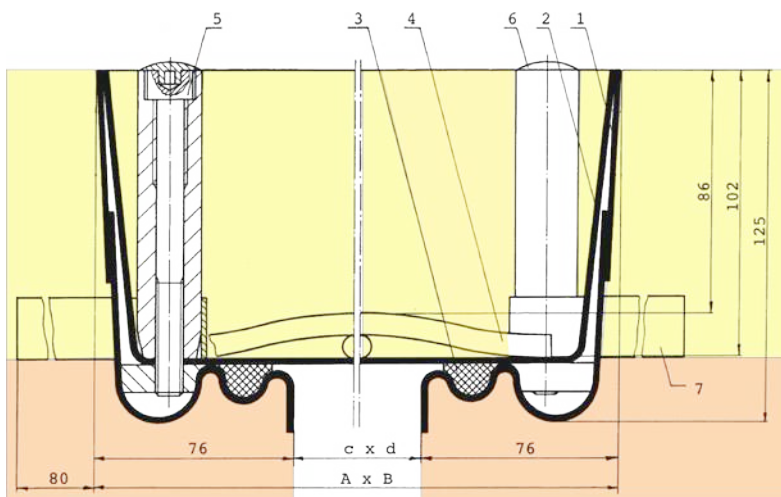
Applications: Inside buildings and their surroundings. Especially for those installations where the cover is to be filled with concrete slabs, bricks, paviers etc.

Installation: Installation must be carried out according to instructions. With water-tight models, care must be taken to seal the outer frame into the surrounding flooring and to fill the cover with water-tight concrete.



Web Link:

<https://surespancovers.com/surecover>



- 1 Frame
- 2 Cover
- 3 Seal
- 4 Reinforcement

- 5 Allen Screw
- 6 Plastic cap
- 7 Anchor

Product Reference	Clear Opening (≈ mm) c x d	Outside Dimensions (≈ mm) A x B	Weight
SBVH Maxi 33	300 x 300	452 x 452	15 kg
SBVH Maxi 44	400 x 400	552 x 552	22 kg
SBVH Maxi 55	500 x 500	652 x 652	27 kg
SBVH Maxi 64	600 x 400	752 x 552	28 kg
SBVH Maxi 66	600 x 600	752 x 752	28 kg
SBVH Maxi 77	700 x 700	852 x 852	32 kg
SBVH Maxi 86	800 x 600	952 x 752	35 kg
SBVH Maxi 88	800 x 800	952 x 952	40 kg
SBVH Maxi 106	1000 x 600	1152 x 752	40 kg
SBVH Maxi 108	1000 x 800	1152 x 952	44 kg
SBVH Maxi 110	1000 x 1000	1152 x 1152	60 kg