



Loading Capacity: 15 kN test load (per EN124)

Materials: Frame in extruded aluminium. Cover in extruded aluminium bonded to a composite aluminium honeycomb panel (with a white coating). Stainless steel screw connections. EPDM sealing

Features: Modern lightweight-construction access cover. There is a recess of 24mm for laying slabs, tiles, parquet etc. In the case of thin tiles, the difference in height can be compensated for by using a suitable tile adhesive (MAPEI Keralastic) and waterproof building board. Sealed design with a very high-quality finish. Very attractive surface, particularly the visible edges. Inconspicuous corner joints make it easy to connect tiles, slabs etc.

Lift Open System: SureCover SCLA comes with a set of lifting keys and precise installation instructions. Jammed covers are released by simply turning the Brass Key provided.

Applications: As a cover inside buildings (pedestrian traffic only), which can be opened by 1-2 persons (depending on the size of the cover) without great effort.

Installation: Installation must be carried out according to instructions. With water-tight models, care must be taken to seal the outer frame into the surrounding flooring and to fill the cover with water-tight concrete.

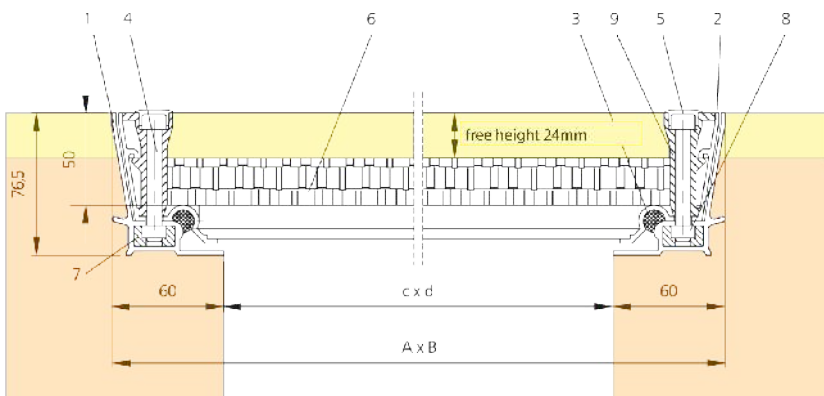


Type SCLA composite light
The super-light weight cover



Web Link:

<https://surespancovers.com/surecover>



- 1 Frame
- 2 Cover
- 3 Seal
- 4 Allen Screw
- 5 Plastic cap
- 6 Aluminium - honeycomb plate (with white coating)

- 7 Injection-moulded part (plastic)
- 8 Square boss
- 9 Die-cast corner

Product Reference	Clear Opening (≈ mm) c x d	Outside Dimensions (≈ mm) A x B	Weight
SCLA 22	200 x 200	320 x 320	3 kg
SCLA 33	300 x 300	420 x 420	5 kg
SCLA 44	400 x 400	520 x 520	7 kg
SCLA 55	500 x 500	620 x 620	9 kg
SCLA 64	600 x 400	720 x 520	9 kg
SCLA 66	600 x 600	720 x 720	10 kg
SCLA 77	700 x 700	820 x 820	12 kg
SCLA 86	800 x 600	920 x 720	12 kg
SCLA 88	800 x 800	920 x 920	15 kg
SCLA 106	1000 x 600	1120 x 720	15 kg
SCLA 108	1000 x 800	1120 x 920	20 kg
SCLA 110	1000 x 1000	1120 x 1120	25 kg