



Loading Capacity: 15 kN test load (per EN124)

Materials: Frame made of 2 mm cold formed precision steel profiles. Hot dip galvanised. Durbar-plate cover.

Features: Sealed cover, flat design. EPDM seal. Opening tool included.

Lift Open System: SureCover SRV comes with a set of lifting keys and precise installation instructions. Jammed covers are released by simply turning the Brass Key provided.

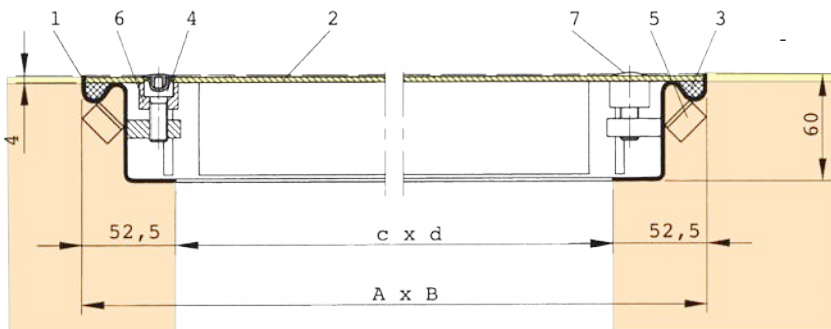
Applications: For pedestrian use inside buildings and their surroundings, particularly for inspection chambers.

Installation: Installation must be carried out according to our instructions. With water-tight models, care must be taken to seal the outer frame into the surrounding flooring.



Web Link:

<https://surespancovers.com/surecover>



1 Frame
2 Durbar-plate cover
3 Seal
4 Allen Screw

5 Anchor
6 Socket
7 Plastic cap

| Product Reference | Clear Opening | Outside Dimensions | Weight |
|-------------------|-----------------|--------------------|--------|
| | (≈ mm) c x d | (≈ mm) A x B | |
| SRV 55 | 500 x 500 | 605 x 605 | 23 kg |
| SRV 64 | 600 x 400 | 705 x 505 | 22 kg |
| SRV 66 | 600 x 600 | 705 x 705 | 29 kg |
| SRV 86 | 800 x 600 | 905 x 705 | 37 kg |
| SRV 88 | 800 x 800 | 905 x 905 | 45 kg |
| SRV 106 | 1000 x 600 | 1105 x 705 | 44 kg |
| SRV 108 | 1000 x 800 | 1105 x 905 | 55 kg |
| SRV 110 | 1000 x 1000 | 11104 x 1105 | 66 kg |