



Loading Capacity: 15 kN test load (per EN124)

Materials: Frame made of aluminium extruded sections. Cover made of 3/5 mm aluminium chequerplate. Aluminium reinforcement to the underside. Stainless steel screws.

Features: Sealed cover. EPDM seal. Completely rust-proof. Light weight. Opening tool included.

Lift Open System: SureCover SRVA comes with a set of lifting keys and precise installation instructions.

Applications: For pedestrian use inside buildings and their surroundings, particularly where corrosion-resistance and/or low weight are of great advantage.

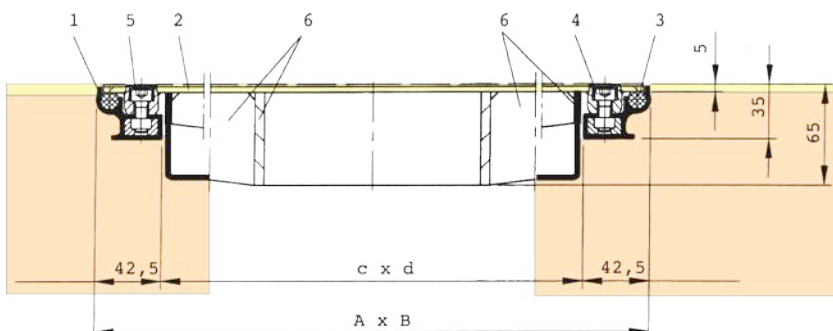
Installation: Installation must be carried out according to our instructions. With water-tight models, care must be taken to seal the outer frame into the surrounding flooring.



Type SRVA Aluminium
Reinforced bottom



Web Link:
<https://surespancovers.com/surecover>



1 Frame
2 Dubar-plate cover
3 Seal

4 Allen Screw
5 Plastic cap
6 Cover reinforcement

Reinforcement of the bottom can vary, according to the size.

| Product Reference | Clear Opening (≈ mm) c x d | Outside Dimensions (≈ mm) A x B | Weight |
|-------------------|-------------------------------|------------------------------------|--------|
| SRVA 22 | 200 x 200 | 285 x 285 | 2 kg |
| SRVA 33 | 300 x 300 | 385 x 385 | 3 kg |
| SRVA 44 | 400 x 400 | 485 x 485 | 4 kg |
| SRVA 55 | 500 x 500 | 585 x 585 | 5 kg |
| SRVA 64 | 600 x 400 | 685 x 485 | 5 kg |
| SRVA 66 | 600 x 600 | 685 x 685 | 8 kg |
| SRVA 86 | 800 x 600 | 885 x 685 | 10 kg |
| SRVA 88 | 800 x 800 | 885 x 885 | 12 kg |
| SRVA 106 | 1000 x 600 | 1085 x 685 | 12 kg |
| SRVA 108 | 1000 x 800 | 1085 x 885 | 15 kg |
| SRVA 110 | 1000 x 1000 | 1085 x 1085 | 18 kg |