



# SURESPAN

www.surespancovers.com

## Aluminium Ladder & Walk Through Cage

Ref No.

### PRODUCT SPECIFICATION

CODE: SLC/WT/A

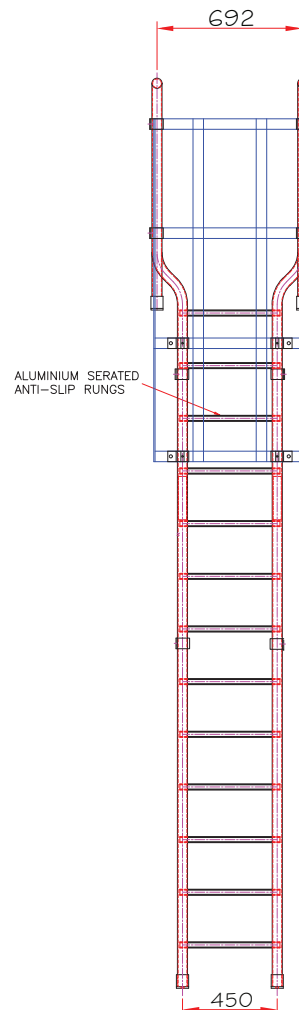
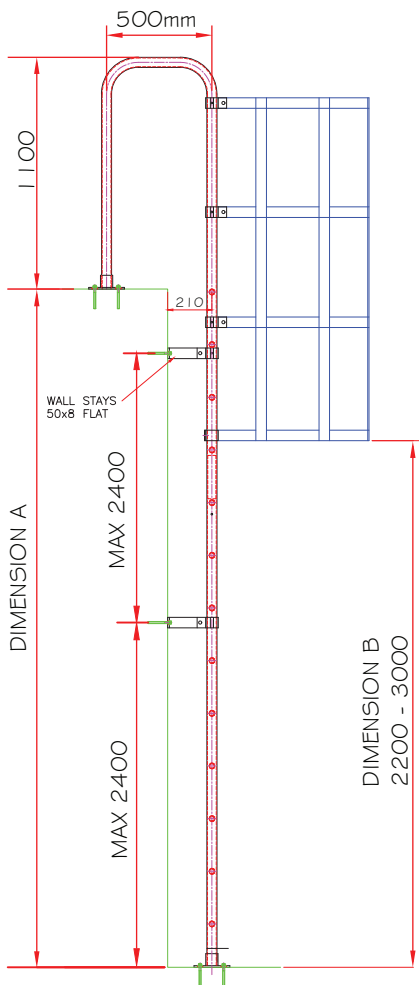
#### LADDER

- Marine Grade Aluminium
- Stiles Size 8 Structural Tube (48.3 o/d)
- Surespan SafeGrip serrated rungs
- Fixings are stainless steel
- Aluminium Mill finish. Optional Powder Coating.
- Ladder width: 450mm
- 210mm Stays at maximum 2400 centres

#### CAGE

- Standard cages for ladders over 2.5m high  
Available with ladder guard/padlock security closure.

Please note: In order to comply fully with BS4211:2005 + A1 2008 any ladder with a climb height of over 3m should be fitted with safety cage



Customer name:

Dimension 'A'

Project title:

Order number:

Date:

Comments:

I can confirm the above information is correct and that our order shall be manufactured to these sizes.

Signed:

